

Working together to get it right!

Uniform 1

Black or grey trousers or tailored shorts.

Black or grey skirt or pinafore dress.

Skirt length should be on the knee and skirt should be of a classic design e.g. A line, box pleat or kilt. Skirts made of jersey material or very short skirts will not be permitted.

White polo shirt or school shirt.

Gingham purple school dress with collar (until October half term).

Purple sweatshirt or cardigan should be worn with all the uniform choices.

Grey/black or white plain socks or tights.

Black flat shoes with covered toes to be worn.



Polite reminders

*No trainers.
No high heeled shoes.
No sandals or plastic shoes.
No boots to be worn.*

*No coloured or pattern socks/ tights.
No playsuits.
No purple Gingham shorts.*

*Hair:
Hair should be one natural colour in keeping with the child's age, i.e. not dyed.*

No significant lines or patterns in hair.

All long hair (shoulder length) should be tied back for school.

*Make up / Jewellery:
No make-up, nail varnish or temporary tattoos.
Earrings should be studs only. No hoops*

Uniform 2

Black or grey trousers or shorts.

White polo shirt or school shirt.

Purple sweatshirt with the school logo.

Black school shoes.

Covid 19 Safety

During Covid 19 protocols we are sadly unable to loan garments out. The school wish to work with home setting and the school will make rea- sonable allowances to give grownups time to purchase PE kit. In the meantime, we ask that grown-ups provide suitable garments for PE activities.

Please do encourage your child(ren) to attend with a full water bottle and KS2 should attend with a healthy snack (KS1 provided) Thank you for working with the school—it is appreciated!



PE Kit

Indoor PE: red polo shirt, black or navy-blue shorts, socks, trainers/ plimsolls.

Outdoor PE: red polo shirt, black or navy-blue jumper / sweatshirt, black or navy-blue tracksuit bottoms, socks, trainers only.

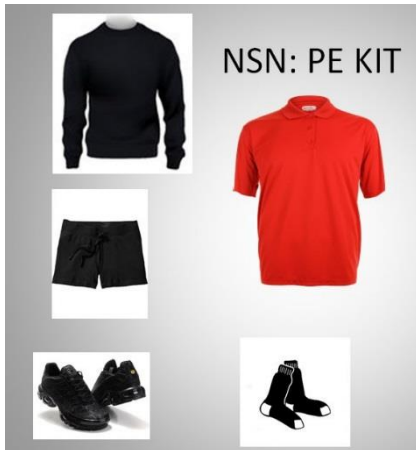
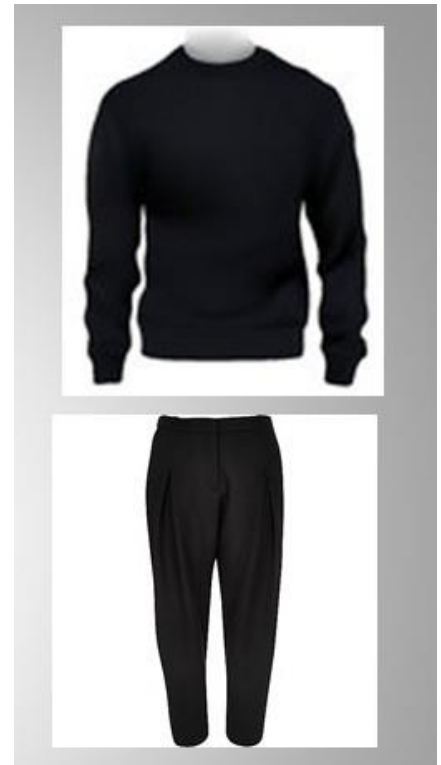
Hair to be tied back if shoulder length or longer.

All jewellery to be removed.

Base layers are permitted underneath their PE kit.

No large logos or fashion attire.

Clean trainers/plimsolls



Thank you for taking pride in your school uniform!

School uniform provides consistency and a sense of belonging for all children in all year groups and significantly reduces bullying.

Please can you note that there are two sets of uniform: Uniform 1 and Uniform 2—we support any child and their choice to pick one set of uniform and wear this in school.

With your help we would like your high standards of appearance to continue -we hope that these guidelines prove helpful. For your information school uniform can be purchased either in store or on-line from local supermarkets.

If you are having financial difficulties organising uniform, we are happy to support you and your child, please contact the school office or the Pastoral Team for advice.