

We also work collaboratively with outside partners by completing referrals including:

- CAF's
- Point 1/ CAMHS
- Occupational therapy
- Voice ability
- Suffolk Positive Futures
- Activities Unlimited
- Educational Welfare Officer (EWO)

Breakfast Club

Breakfast Club can help provide your child with breakfast and lots of opportunities to socialise and make new friends.

If you feel your family would benefit from breakfast club support then please speak to a member of the team.

Porcupines Summer 1 End of Topic Video



"Children come to school to be safe. Children come to school to learn"



Early Help Offer

2021-2022

See how we can help you.....



Concerned about a Child's Safety?

You can speak to any member of staff if you have concerns about a child's safety. Alternatively you can report anonymously using the telephone number or the link below:

- **0808 800 4005**



What is Early Help?

At Northfield St Nicholas Primary Academy we understand that from time to time family life can have its complications. These may be the times when you need some extra help and support. To support and advise you at such times we have an Early Help Offer.

When should I contact the Inclusion Team?

Contact us when you have a concern which is affecting your child. We will always try to see you quickly or to give you a call to find out what the problem is and arrange to meet and discuss it with you.

What sort of concerns might parents share with our team?

A wide range of issues such as academic concerns, behaviour management, financial worries, housing concerns, mobility difficulties, bereavement and loss, cyber bullying – in fact any concerns which you are worried might be having a negative impact on your children.

What might we offer in response to your concerns?

We might offer your child access to support from trained members of staff who run bespoke interventions. You can discuss what support would be best to meet your child or families need with any member of the Safeguarding and Inclusion Team.

For attendance concerns, support through school will be offered and, if needed, we may refer to outside agencies. Outside counsellors, such as the school nurse are referred to for additional support.

What support do we offer?

We can offer advice on a range of concerns or can signpost parents to other sources of information, help and support.

In school we can offer:

- THRIVE
- One to one pupil mentoring/coaching
- Food bank/ Food parcels
- Uniform funding
- Restorative Practice
- Daily check ins
- Breakfast club
- After school club
- SEND Forum
- Sports clubs

Whose who?



Safeguarding and Inclusion Lead
Miss Higgins
Special Educational Needs Co-Ordinator and Safeguarding Lead

Safeguarding Office
Miss Hall
Deputy Designated Safeguarding Lead



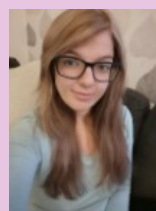
Restorative Practice Lead
Mrs Howgate
Deputy Designated Safeguarding Lead

Attendance Officer
Mrs Tinsley
Deputy Designated Safeguarding Lead
Attendance support



THRIVE practitioner
Miss Eglington

Positive relationships and Behaviour support
Ms Woolston



SEND support
Mrs Richardson

Early Help Practitioner
Mrs Leech

